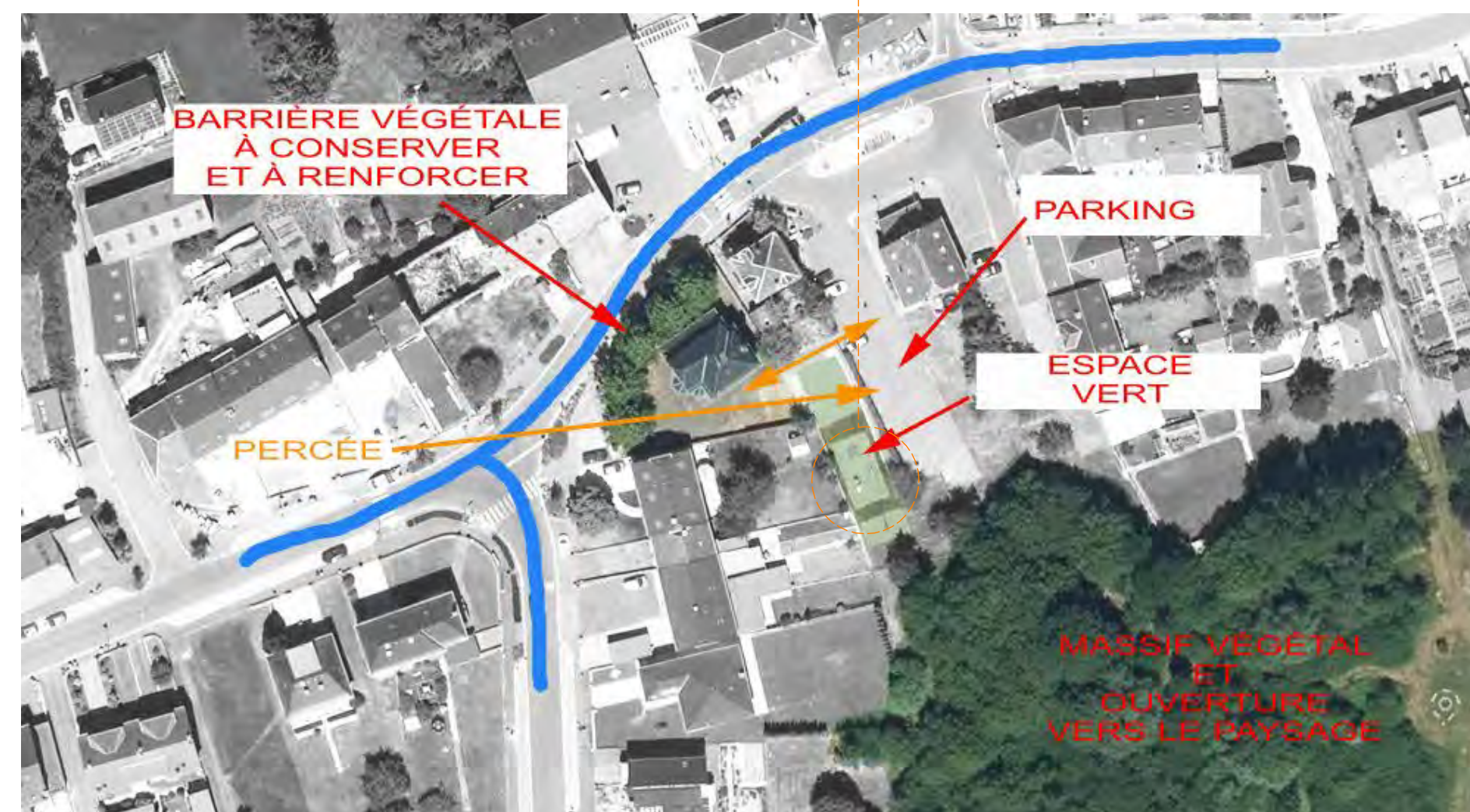


LES LAUREATS DU CONCOURS « GÎTES MINETT TRAIL »

Käerjeng

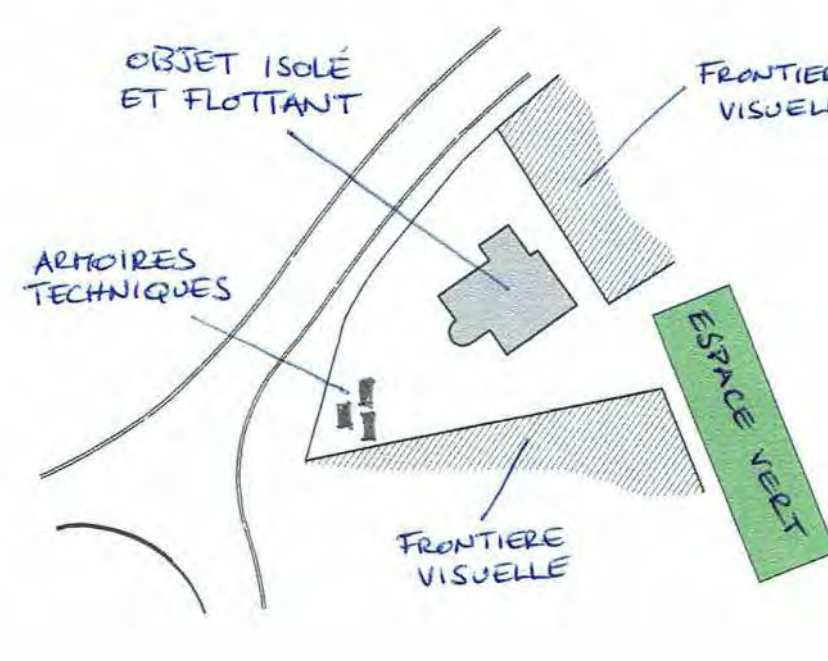
O3 ARCHITECTURE (Projet n°631509)



ENJEUX SITUATION ACTUELLE

INTENTIONS - 1/1000

1. UN ROCHER LOUR ET STATIQUE AU MILIEU DU SITE



SUPERPOSITION MEZZANINES SUR ETAGE+1

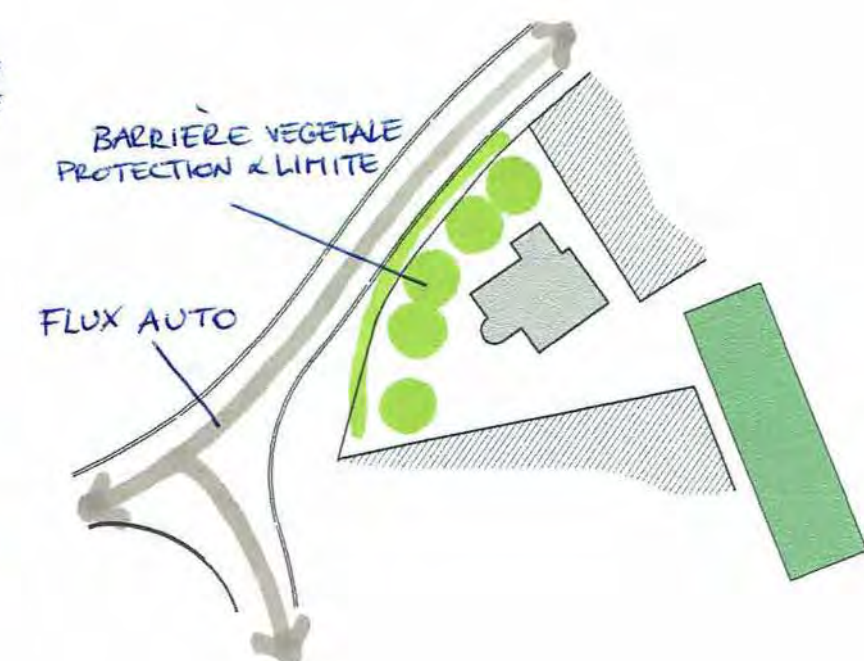


MODULES DE SPORT EN ROBINIER

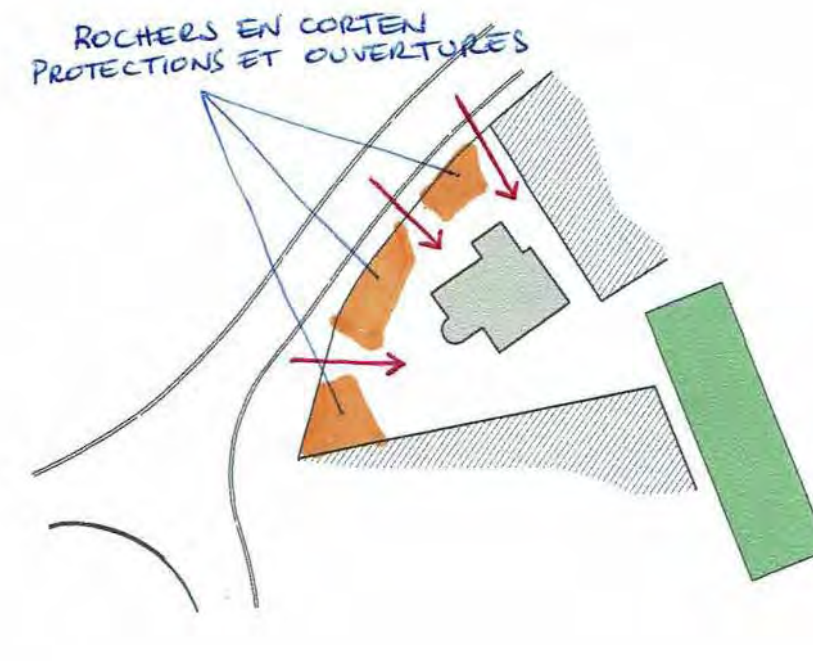


AIRES DE JEUX EN ROBINIER (EX. PARC DIEKIRCH)

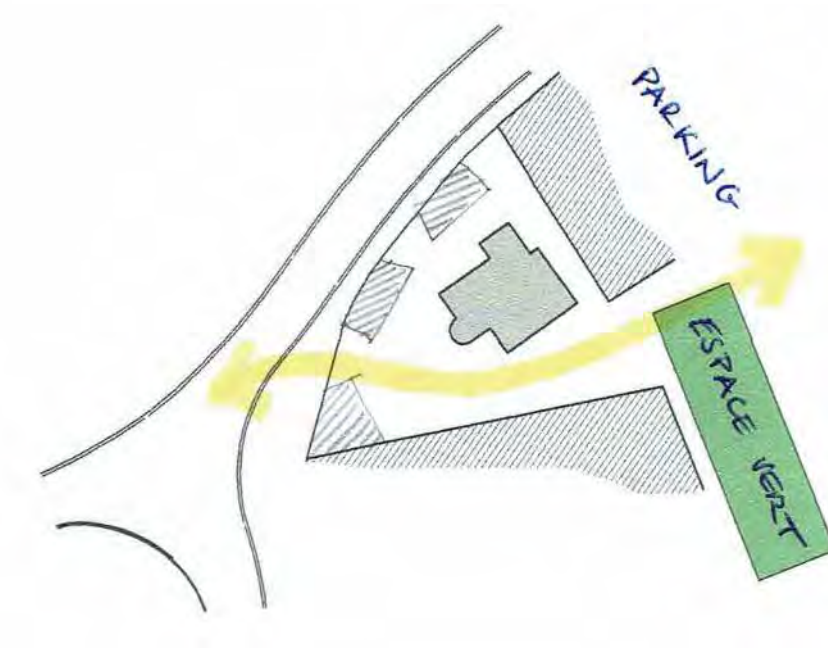
2. LIMITES ET PROTECTION DU SITE



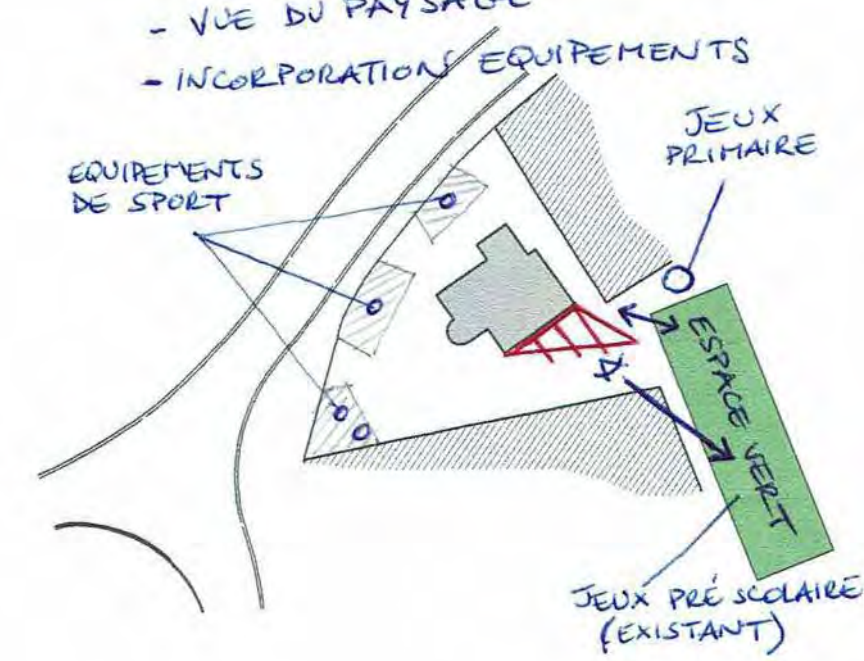
3. PERMEABILITE / ACCESSIBILITE AU SITE



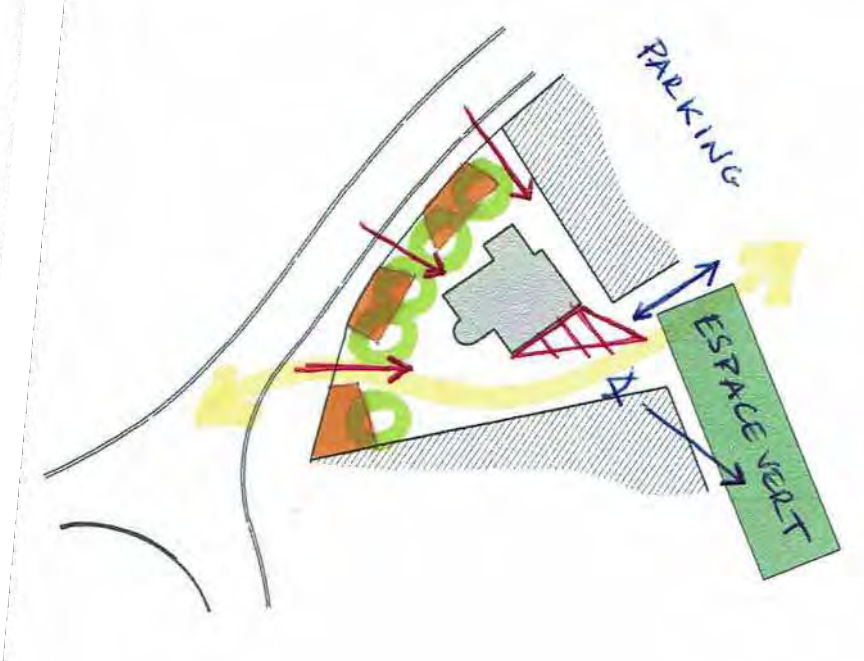
4. PERCEE VISUELLE ET TRAVERSEE DU SITE



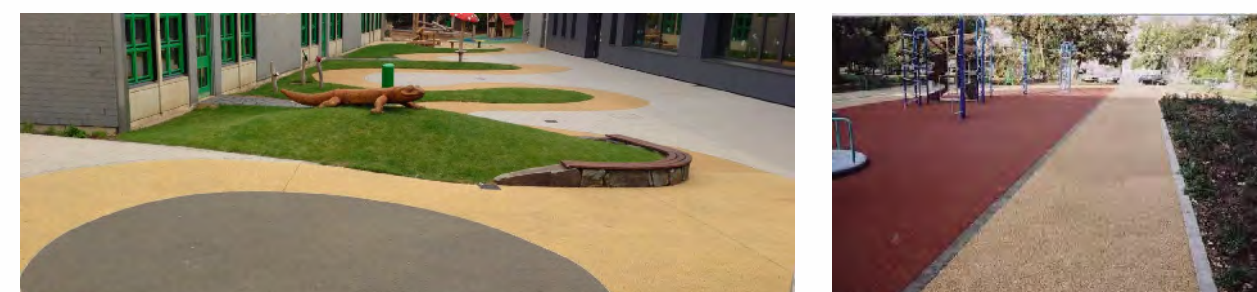
5. UN OBJET LEGER ET DYNAMIQUE



6. LE PROJET



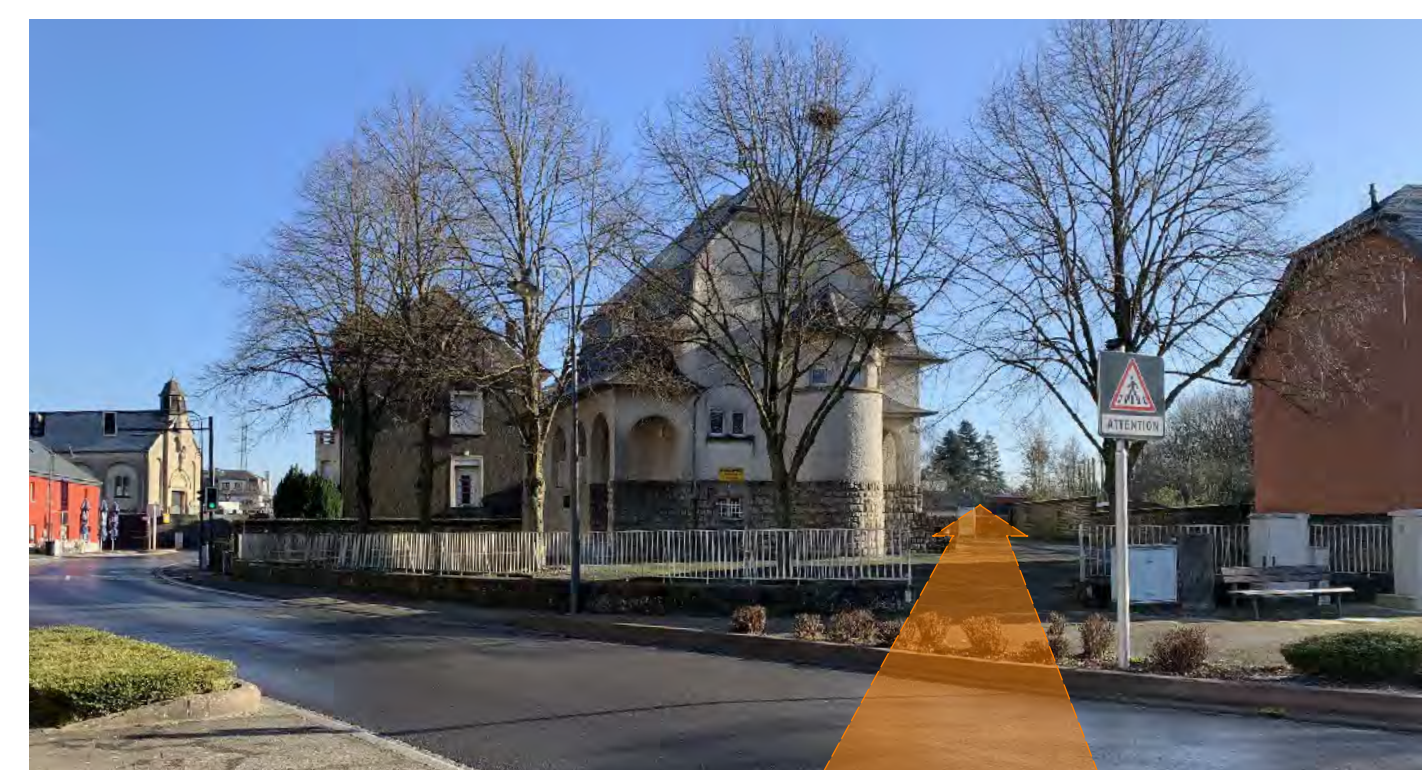
ACCES TECHNIQUE
ACCES VELOS (GITE)



TERRAWAY



EMPRISE COFFRETS RESEAUX



PERCEE VISUELLE



JEUX "PRESCOLAIRE" EN PLACE

TRAVERSEE PIETONS
ACCES DEPUIS PARKING

ESPACE DISPONIBLE POUR
AIRES DE JEUX "PRIMAIRE" (MODULE)



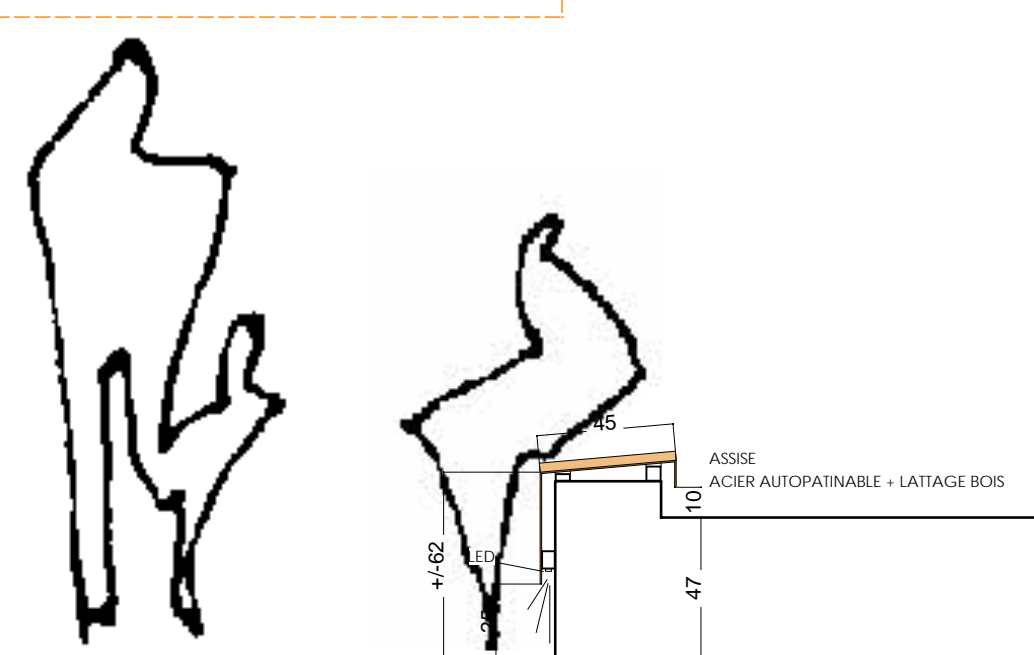
SITUATION PROJETEE - TRAVERSEE PIETONS



SITUATION PROJETEE - ACCES PRINCIPAL



"BRAGONIUM" Daniele BRAGONI

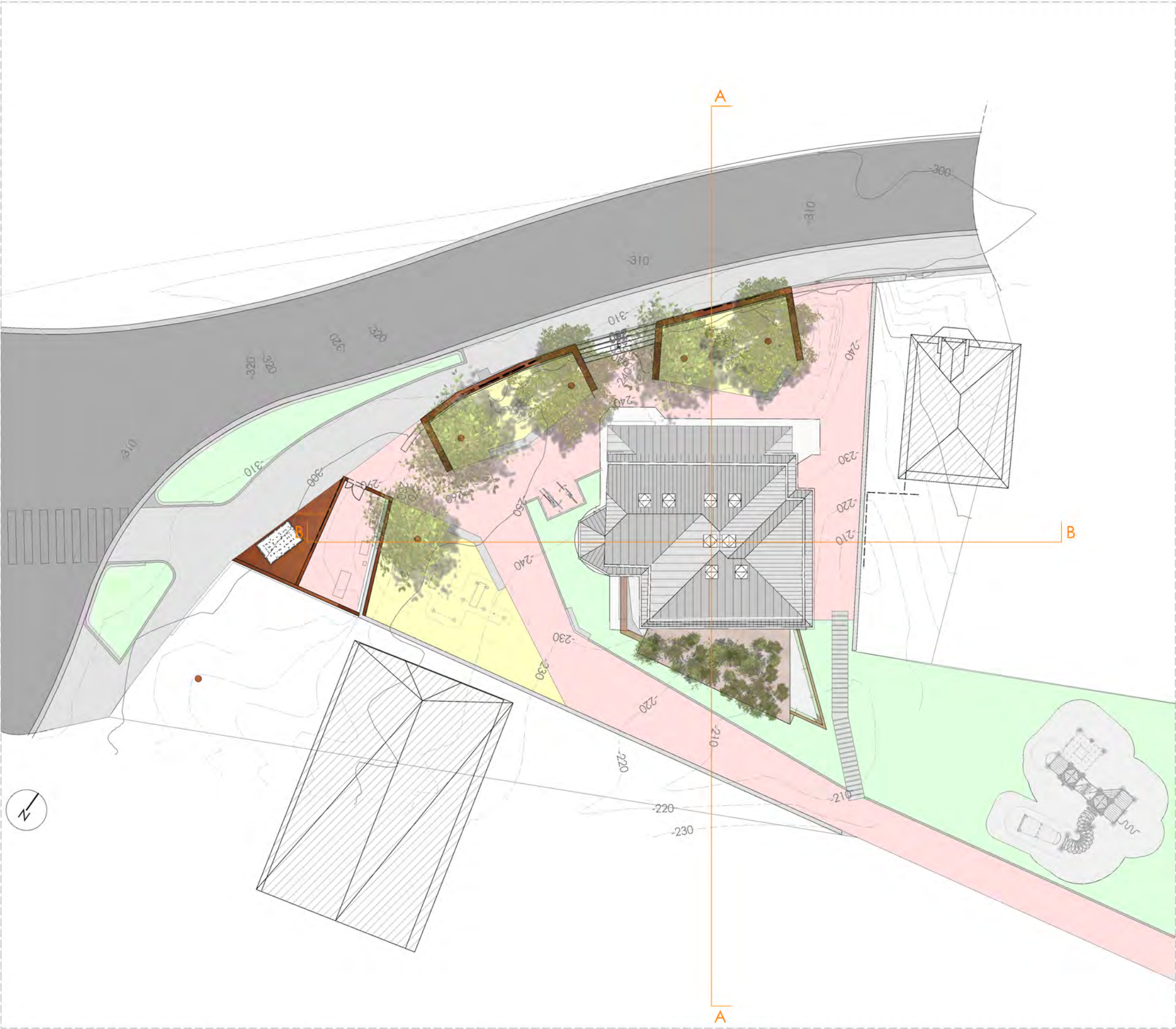


PROJET TERRAIN EXISTANT

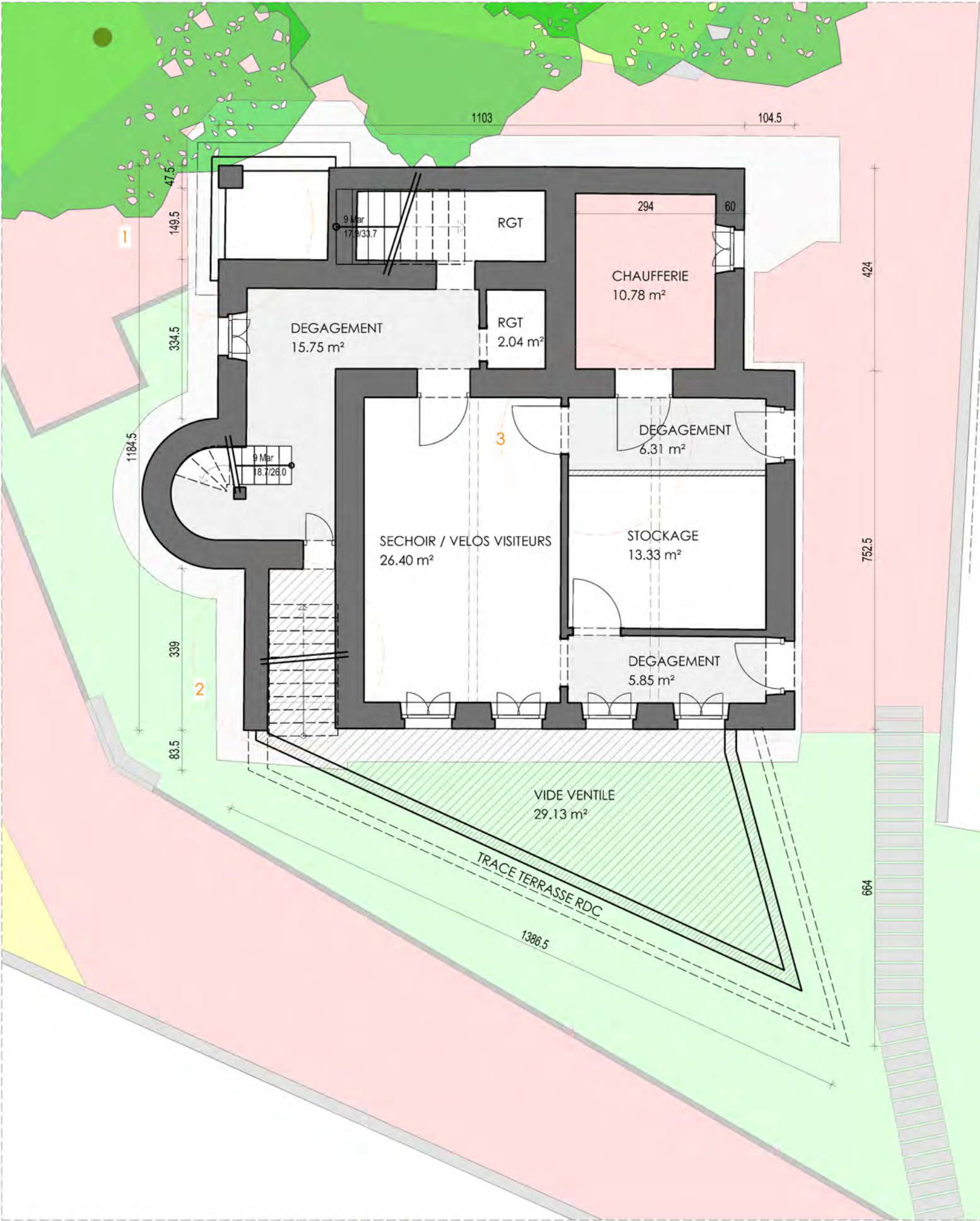
RED

ROCK

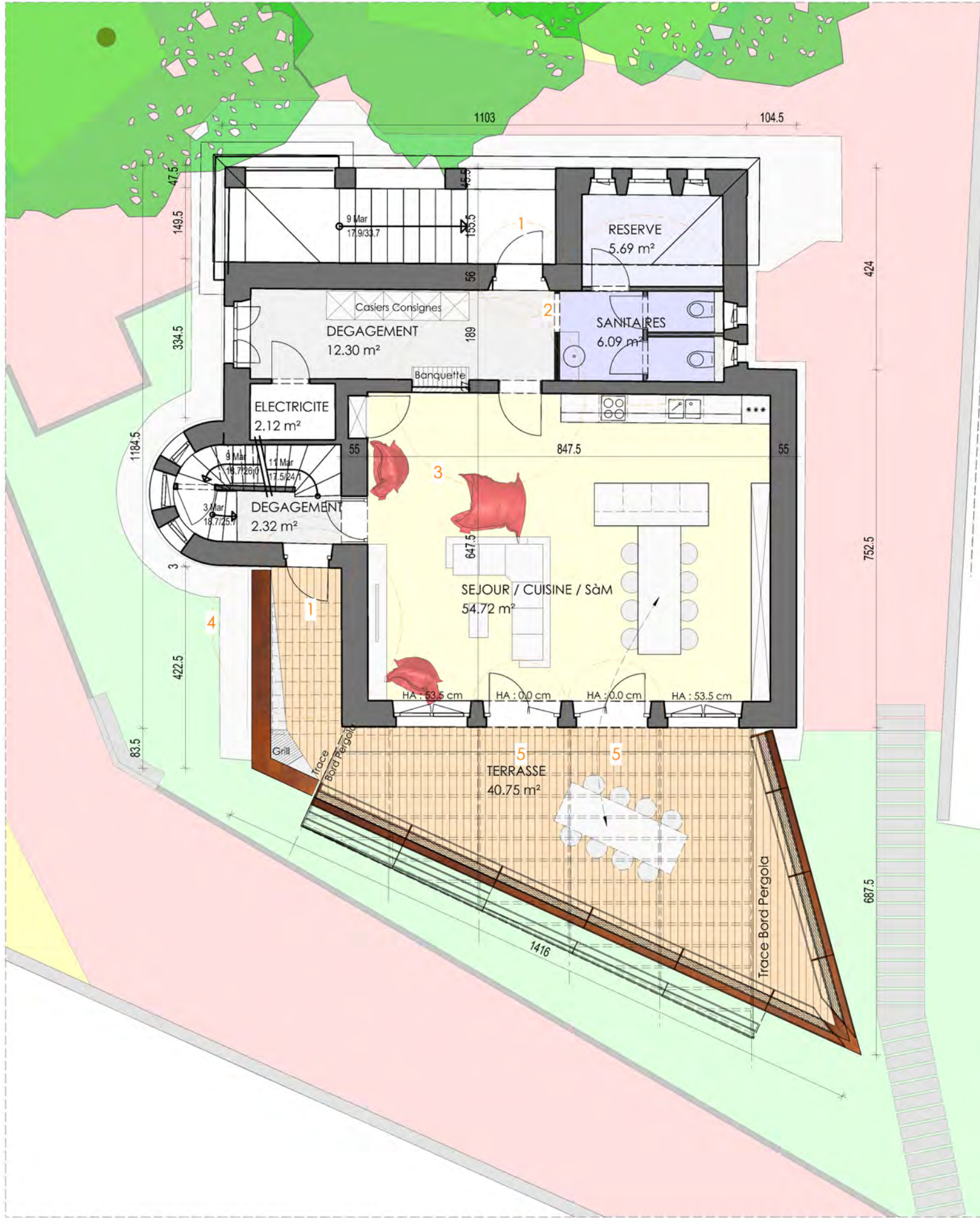
TRAIL



IMPLANTATION - 1/250



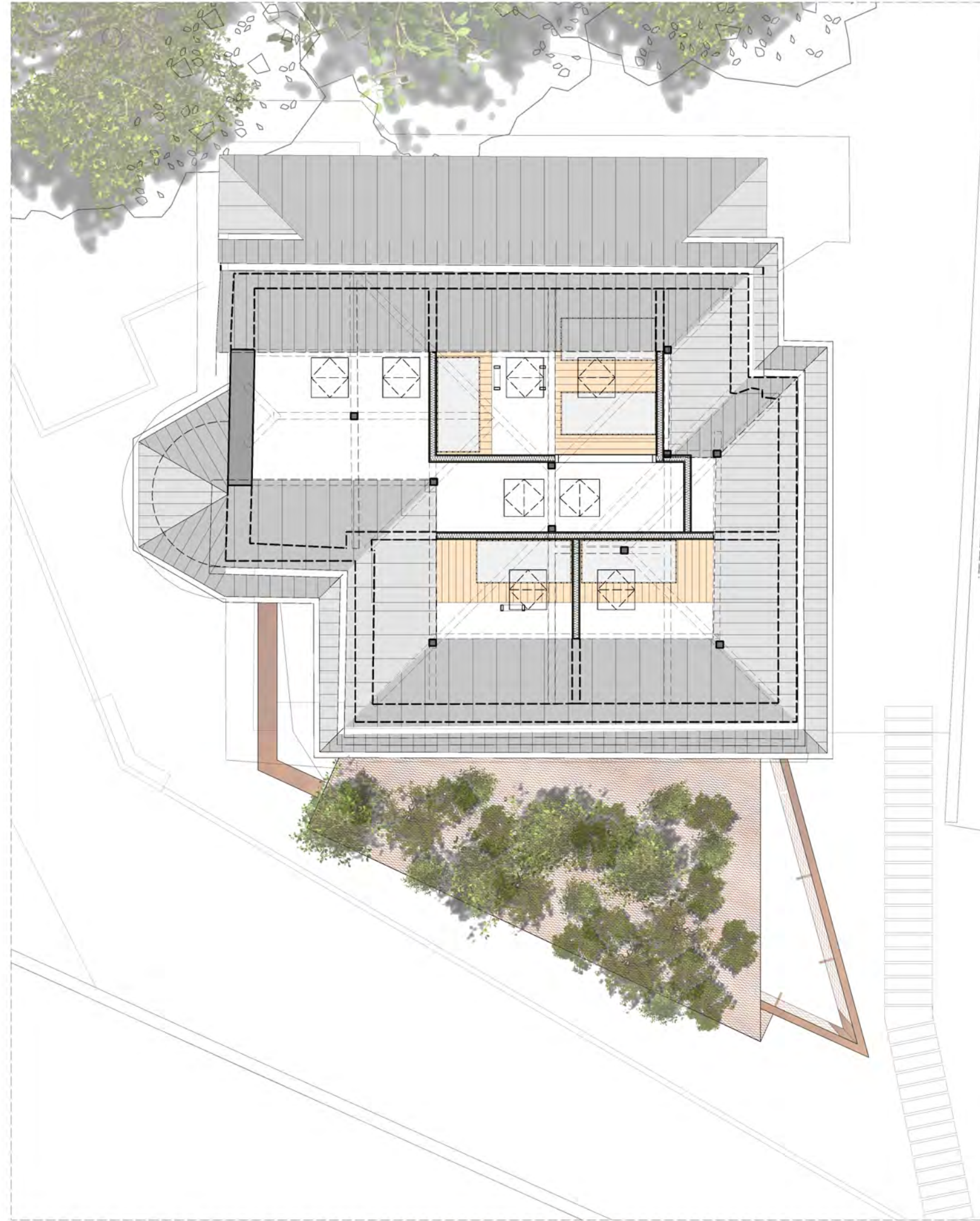
SOUS-SOL - 1/100
INTERVENTIONS SUR GROS-ŒUVRE
1. ABAISSMENT ALLEE / ACCES PRINCIPAL
2. SUPPRESSION ESCALIER (ACCES SECONDAIRE EXISTANT)
3. CREATION DE BAIE / MACONNERIE / POSE NOUVELLE PORTE CHAUFFIERE



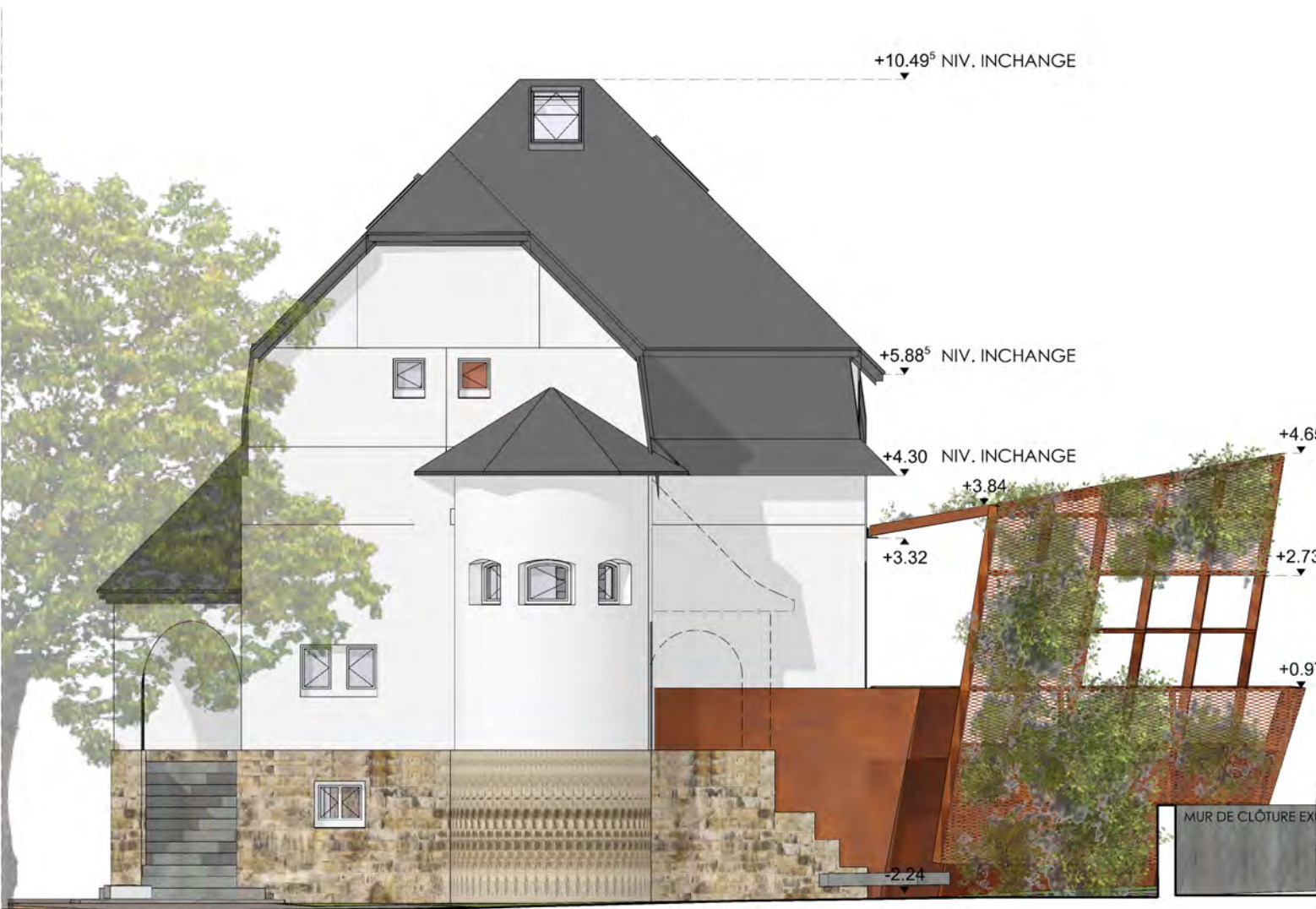
REZ-DE-CHAUSSEE - 1/100
INTERVENTIONS SUR GROS-ŒUVRE
1. REMPLACEMENT DES PORTES D'ENTREE
2. REORGANISATION ESPACE SANITAIRES
3. CREATION DE BAIE / MACONNERIE
4. SUPPRESSION APPENTIS EXISTANT
5. ABAISSMENT ALLEE / ACCES TERRASSE



ETAGE +1 - 1/100
INTERVENTIONS SUR GROS-ŒUVRE
REORGANISATION COMPLETE DE L'ETAGE + COMBLES



COMBLES | MEZZANINES - 1/100
INTERVENTIONS SUR GROS-ŒUVRE
REORGANISATION COMPLETE DE L'ETAGE + COMBLES
AJOUT FENETRES DE TOIT



ELEVATION OUEST - 1/100



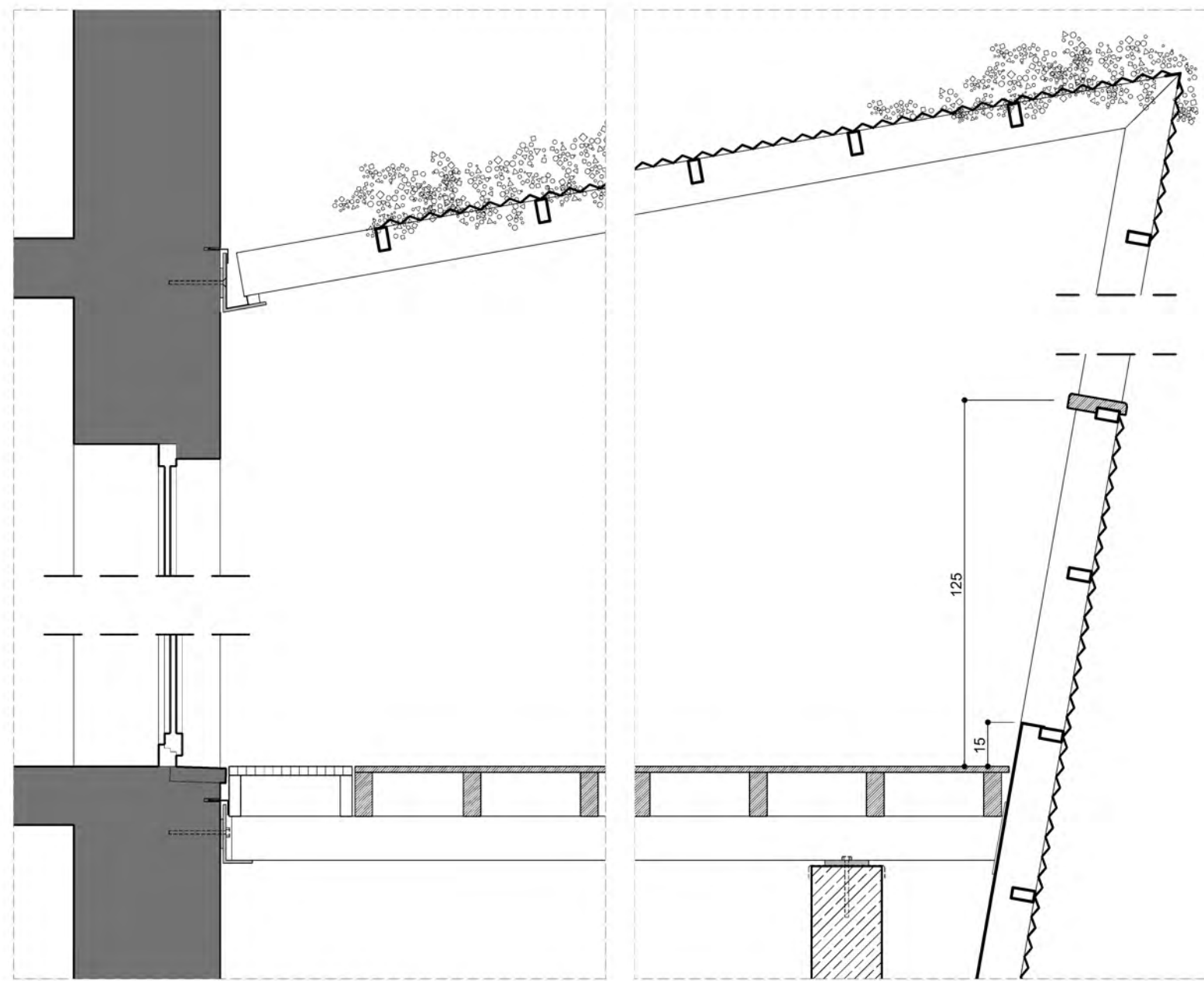
ELEVATION SUD - 1/100



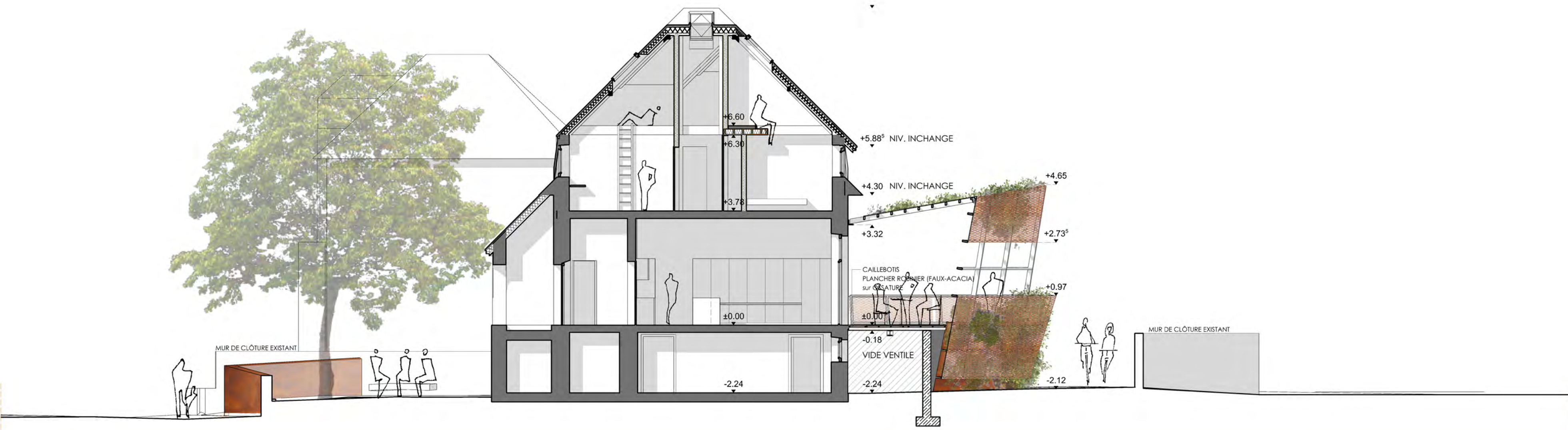
ELEVATION EST - 1/100



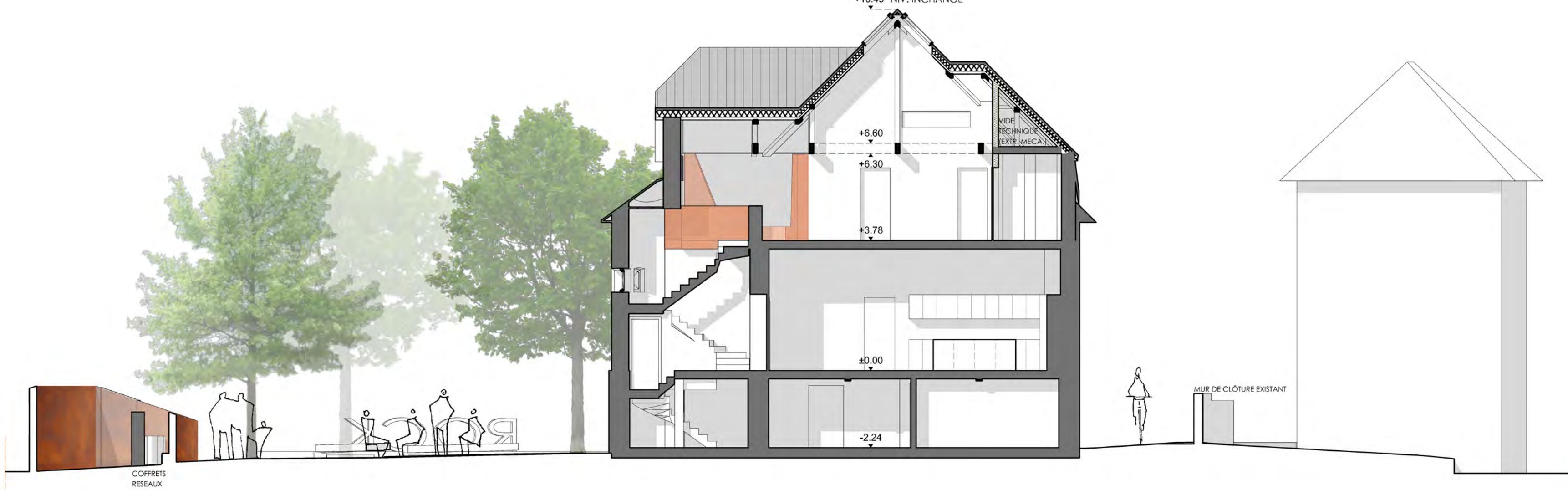
ELEVATION NORD - 1/100



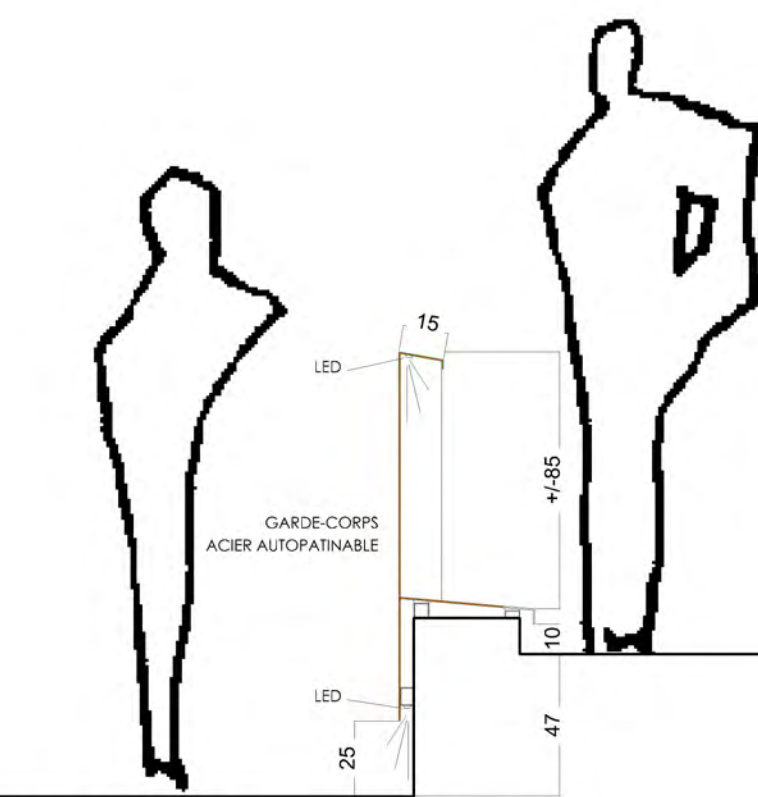
DETAILS CONSTRUCTION TERRASSE - 1/20



COUPE A - 1/100



COUPE B - 1/100



PROFIL TERRAIN EXISTANT

RED

ROCK

TRAIL